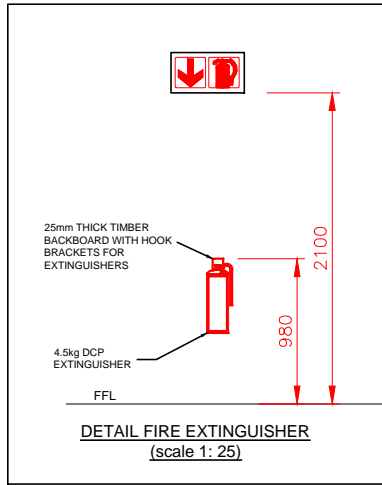


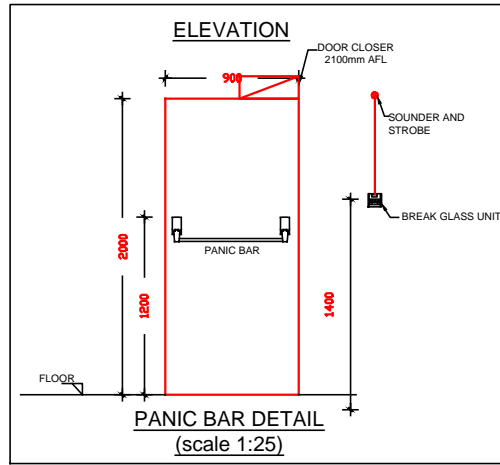
Local Authority stamp



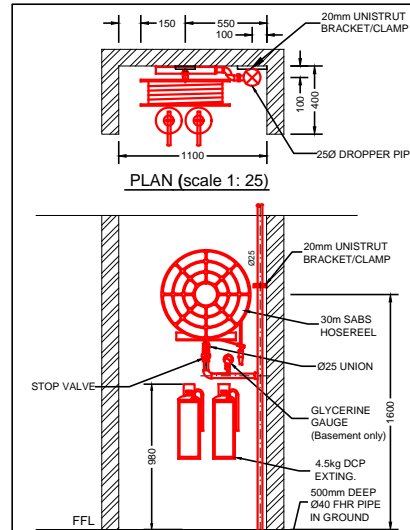
SITE LOCATION



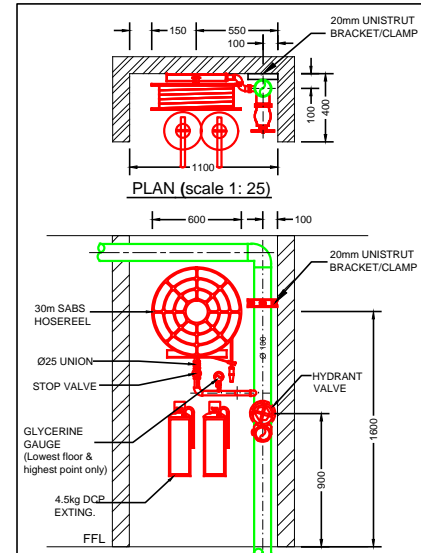
DETAIL FIRE EXTINGUISHER
(scale 1: 25)



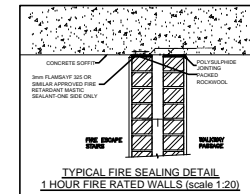
PANIC BAR DETAIL
(scale 1:25)



FIRE HOSE & EXTINGUISHER
ELEVATION (scale 1: 25)



HYDRANT, FIRE HOSE & EXTINGUISHER
ELEVATION (scale 1: 25)



TYPICAL FIRE SEALING DETAIL
1 HOUR FIRE RATED WALLS (scale 1:20)

| FIRE DOOR SCHEDULE | | | | | | | | | |
|--------------------|---------|-------------|------------|-------------|-------------|--------|-----------|-------------|-----------|
| DOOR TAG | SWING | FIRE RATING | DOOR SIZE | | NORMAL DOOR | | PANIC BAR | DOOR CLOSER | HOLD OPEN |
| | | | WIDTH (mm) | HEIGHT (mm) | OPEN | CLOSED | | | |
| FD_1 | ONE WAY | 60 minute | 811 | 2100 | N/A | YES | NO | YES | NO |
| FD_2 | ONE WAY | 60 minute | 815 | 2100 | N/A | YES | NO | YES | NO |
| FD_3 | ONE WAY | 60 minute | 767 | 2100 | N/A | YES | NO | YES | NO |

CLOUDED INDICATES
EXISTING TO REMAIN

| NEW FIRE SIGNS & EQUIPMENT COUNT | | | | | | | | | | | | |
|----------------------------------|--------|--------|--------|--------|--------|--------|--------|--------|--------|--------|--------|--------|
| SYMBOL | SYMBOL | SYMBOL | SYMBOL | SYMBOL | SYMBOL | SYMBOL | SYMBOL | SYMBOL | SYMBOL | SYMBOL | SYMBOL | SYMBOL |
| REFERENCE | E1 | E2 | E3 | E6 | F4 | F1 | F2 | F3 | F45 | F31 | FHR | HYD |
| QUANTITY | 3 | 4 | 6 | 2 | 3 | 1 | 1 | 1 | 1 | 2 | 1 | 1 |

| EXISTING FIRE SIGNS & EQUIPMENT COUNT | | | | |
|---------------------------------------|--------|--------|--------|--------|
| SYMBOL | SYMBOL | SYMBOL | SYMBOL | SYMBOL |
| REFERENCE | E1 | F13 | FHR | EXT |
| QUANTITY | 1 | 3 | 1 | 6 |

| FIRE SERVICES DESIGN SUMMARY SCHEDULE | | |
|---------------------------------------|---------|--|
| 1.1 FLOOR AREA: | 657 | m² |
| 1.2 OCCUPANCY CLASS: | G1 | OFFICE |
| 1.3 POPULATION: | 1/ SEAT | 119 |
| 1.4 ROUTES OF ESCAPE required: | 2 | 1-OFF 1370mm & 1-OFF 1189mm WIDE DOORS |
| 2.1 FIRE HYDRANT: | 1/ 1000 | m² = 1 REQUIRED, 30 METERS APART |
| 2.2 FIRE HOSE REEL: | 1/ 500 | m² = 1 REQUIRED, WITH 30 METER LONG HOSES |
| 2.3 EXTINGUISHERS: | 1/ 200 | m² = 3 REQUIRED, 4.5kg DCP TYPE |
| 2.4 SPRINKLER PROTECTIONS: | NO | NOT REQUIRED |
| 3.1 FIRE DETECTION: | YES | THROUGHOUT THE BUILDING IN ACCORDANCE WITH SANS 10139:2021 (Category L3) |
| 3.2 SMOKE VENTILATION: | NO | COMPARTMENTALISED TO LESS THAN 500m² |

SCOPE OF WORKS CLARIFICATION

- FIRE CONTRACTOR**
 - SERVICE AND RE-USE EXISTING FIRE EXTINGUISHERS AND 1-OFF FIRE HOSE REELS
 - SUPPLY & INSTALL NEW FIRE FIGHTING EQUIPMENT AS INDICATED ON PLAN.
 - SUPPLY & INSTALL NEW FIRE SIGNAGE AS INDICATED ON PLAN.
 - NEW EVACUATION PLANS & PROCEDURES.
- ELECTRICAL CONTRACTOR**
 - SUPPLY AND INSTALL EMERGENCY LIGHTING THROUGHOUT THE SPACE AS SHOWN ON PLAN, c/w BATTERY BACKUP.
- BUILDER**
 - SUPPLY AND INSTALL PANIC BARS c/w WHITE ON GREEN "PUSH BAR TO OPEN" SIGN
 - PROVIDING PENETRATIONS THROUGH CEILINGS AND WALLS AND MAKING GOOD THEREOF.
 - FIXING OF EXTINGUISHER BACKING BOARDS TO WALLS SUPPLIED BY FIRE CONTRACTOR.
 - SUPPLY & INSTALL NEW FIRE DOORS C/W 25mm STEEL FRAME AND DOOR CLOSER.
 - FIRE SEALING OF PENETRATIONS THROUGH FIRE WALLS.

FIRE INSTALLATION NOTES

PORTABLE FIRE EXTINGUISHERS
FIRE EXTINGUISHERS SHALL BE 4.5kg AND 8kg DRY CHEMICAL POWDER TYPE AND SHALL COMPLY WITH SABS 810.
ALL FIRE EXTINGUISHERS SHALL BE MOUNTED ON WOODEN BACKING BOARDS.

FIRE HOSE REELS
FIRE HOSE REELS SHALL CONFORM TO SABS 543.
ALL FIRE HOSE REELS SHALL BE COMPLETE WITH 30 METERS OF HOSE AND SHALL HAVE A MINIMUM FLOW RATE OF 0.5 l/s AT 300 kPa.

FIRE HYDRANTS
FIRE HYDRANTS SHALL COMPLY WITH SABS 543 AND HAVE A MINIMUM FLOW RATE OF 20 l/s AT 300 kPa.

PIPING
NO PIPEWORK TO BE EMBEDDED IN SCREED OR CONCRETE FLOORS.
ALL PIPEWORK SHALL CONFORM TO SABS 62 (STEEL, MEDIUM).

THE DISTANCE BETWEEN PIPE SUPPORT BRACKETS FOR THE HORIZONTAL & VERTICAL PIPEWORK, SHALL NOT EXCEED THE FOLLOWING:

| NOMINAL DIAMETER | MAXIMUM SPACING |
|------------------|-----------------|
| < 65 MM | 4M |
| > 65MM | 6.1M |

PIPING SHALL BE PROPERLY CLEANED OFF SITE, FROM RUST & LOOSE MILL SCALE WITH A HARD WIRE, & DECREASED PRIOR TO APPLICATION OF A RED OXIDE PRIMER/FINAL COATS OF PAINT TO BE 2 OFF SIGNAL RED, HIGH GLOSS ENAMEL TO SABS 630.
ALL BRACKETS, SUPPORTS & FITTINGS TO BE GALVANIZED.
ALL SCREWED JOINTS TO COMPLY WITH BS 21 OR SIMILAR.
SEALING OF JOINTS WILL BE WITH HEMP, STOGG OR PTFE TAPE.
HYDRAULIC PRESSURE TESTING SHALL BE DONE TO 15 BAR FOR A PERIOD OF 24 HOURS.

SYMBOLIC SAFETY SIGNAGE
SYMBOLIC SAFETY SIGNAGE SHALL COMPLY WITH SABS 1196 PART V AND SHALL BE OF THE PHOTOLUMINESCENT TYPE.
SIGNAGE SHALL BE INSTALLED SUCH AS TO CLEARLY INDICATE THE POSITIONS OF ALL FIRE EQUIPMENT AND ESCAPE ROUTES.
EACH FLOOR LEVEL SHALL BE NUMBERED IN THE ESCAPE STAIRS. SIGNAGE ON DRAWING IS AN INDICATION OF SIGNAGE REQUIRED.
FINAL SIGNAGE TO BE DETERMINED ON SITE.
ADDITIONAL SIGNAGE TO BE ADDED SHOULD IT BE REQUESTED BY THE LOCAL AUTHORITIES.
FINAL FIRE SIGNAGE IS TO BE DETERMINED ON SITE WITH THE COUNCIL'S FIRE OFFICER.

FIRE DOORS
FIRE DOORS OF THE RATING AND WIDTH AS INDICATED ON THE DRAWINGS, SHALL BE INSTALLED AND SHALL COMPLY WITH SANS 1253.
ALL FIRE DOORS TO BE FITTED WITH SELF CLOSING MECHANISMS.

FIRE ALARM / DETECTION
FIRE DETECTION AND ALARM SYSTEM SHALL BE INSTALLED AS INDICATED ON THE DRAWINGS AND IN ACCORDANCE WITH SANS 10139.

ESCAPE DOORS
ALL ESCAPE DOORS SHALL BE COMPLETE WITH FIRE ESCAPE IRONMONGERY.

FIRE ESCAPE ROUTES
FIRE ESCAPE ROUTES, INCLUDING CORRIDORS AND STAIRWAYS SHALL HAVE MINIMUM WIDTH OF 1500mm UNLESS SHOWN OTHERWISE.
ALL ESCAPE ROUTES SHALL HAVE A FIRE RESISTANCE AS INDICATED.
ALL EMERGENCY ROUTES SHALL HAVE A FIRE RESISTANCE AS INDICATED ON THE DRAWINGS.

FIRE SERVICES LEGEND

| | |
|--|--|
| | |
| | |
| | |
| | |

FIRE DESIGN CONFIRMATION

| | |
|--|-----|
| DEEMED TO SATISFY WITH SANS 10400 | N/A |
| RATIONAL ASSESSMENT | YES |
| RATIONAL DESIGN EQUIVALENT OR SUPERIOR TO SANS 10400 | N/A |

| | | | |
|------------------|------------|-----------|---|
| ISSUE DATE: | 2022-07-14 | REVISION: | D |
| FOR INFORMATION | | | |
| FOR APPROVAL | | | |
| X FOR TENDER | | | |
| FOR CONSTRUCTION | | | |
| AS-BUILT | | | |

REVISIONS

| No | Date | Description | Rev | By | Ckd | By |
|----|------------|--|-----|-----|-----|----|
| A | 02/06/2021 | ISSUED FOR INFORMATION | A.D | H.R | | |
| B | 29/06/2021 | DRAWING UPDATED TO SUIT NEW ARCHITECTURE | S.M | H.R | | |
| C | 05/08/2021 | DRAWING UPDATED TO SUIT NEW ARCHITECTURE | S.M | H.R | | |
| D | 2022/07/14 | DRAWING UPDATED W.T - NEW ARCHITECTURE ADDED - ISSUED FOR TENDER | L.S | H.R | | |

09 Plantanus Street
Kuijsriver
7580

CONSULTMECH
Mechanical Engineers

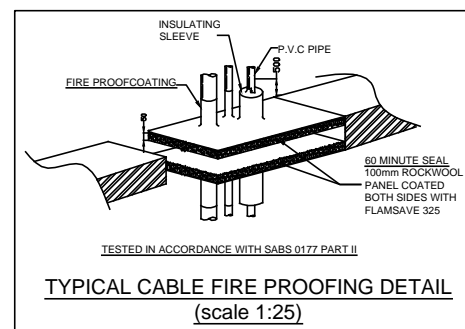
Cell: (072) 948 4470
Tel: (021) 903 1407
Email: info@consultmech.co.za

| | | | |
|-------------|-------------------------|-------------|------------|
| PROJECT | LAHAE LA SARS - BLOCK C | | |
| DWG TITLE | BROOKLYN | | |
| DWG NUMBER | 21B09-F-503-03 | | |
| DESIGNED BY | L.N SIBIYA | SCALE | 1:100 @ A1 |
| CHECKED BY | H.D ROUX | ECSA NUMBER | 201070151 |
| APPROVED BY | H.D ROUX | ECSA NUMBER | 201070151 |

COPYRIGHT AND RIGHT OF REPRODUCTION OF THIS DRAWING OR ANY PORTION THEREOF IS RESERVED BY THE ENGINEERS

W:\SERVER01\Projects\2021\21B09 - RPX 6000014614 SANS TENDER\8. DRAWINGS\Mech\Fire\Signage\21B09-F-503 - BLOCK C\PROPOSED FIRE SERVICES LAYOUT_2022-07-14.dwg, 2022/07/20 12:36:43 PM, L5

GROUND STOREY - PROPOSED FIRE SERVICES LAYOUT (Scale 1:100)



TYPICAL CABLE FIRE PROOFING DETAIL
(scale 1:25)